

DIY MAKE

COMERCIO
CATÁLOGO GENERAL 2024

DNK
DYNEKE



Desde Dyneke trabajamos día a día para lograr la excelencia en nuestro producto final así como en todo el proceso de fabricación.

En este catálogo encontrarás todas las prendas que hemos diseñado con mimo y delicadeza para que en tu negocio vistas con elegancia, glamour y distinción.

La calidad, la innovación, el trabajo en equipo y el **diseño** son nuestros valores principales.

Utilizamos materias primas que ofrecen la mayor **calidad** apostando por la **innovación** y el uso de las nuevas tecnologías en todos los sectores de la empresa.

El **trabajo en equipo** es muy importante para llevar a cabo nuestros proyectos de manera coordinada y coherente. Para ello contamos con un equipo de profesionales diverso y exigente dentro de cada ámbito y departamento.

En cuanto al **diseño** de nuestros productos, nos basamos en las últimas tendencias de moda haciendo que nuestros usuarios puedan lucir prendas originales y exclusivas.

¡Descubre nuestra colección de prendas y complementos para vestir a los mejores profesionales!



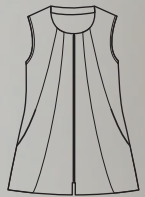
DNK



COMERCIO

www.dyneke.com

8269571

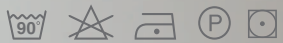


8269

Casaca sin mangas y cremallera central en microfibra. Sleeveless jacket with zipper in microfiber.

- 570 Blanco · White
- 571 Negro · Black
- 572 Fucsia · Fuchsia
- 573 Pistacho · Pistachio

Microfibra (100% Pol.)
150 gr/m²



Largo/length: 74 cm
Talla/Size: SP-XG/XS-XXXL



82695573

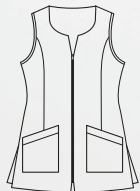


8269572



8269570





8292

Casaca básica sin mangas y cremallera central. Basic sleeveless jacket with central zipper.

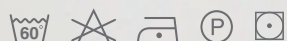
487 Lila · Purple
Microfibra (100% Pol.)
150 gr/m²



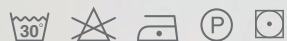
573 Pistacho · Pistachio
100% Pol./Poly.
150 gr/m²



900 Blanco · White
67% Pol./ Poly. · 33% Algod./Cotton
195 gr/m²



725 Negro · Black
768 Fucsia · Fucsia
100% Pol./Poly.
165 gr/m²



Largo/length: 73 cm
Talla/Size: SP-XG/XS-XXXL



8292487



8292900



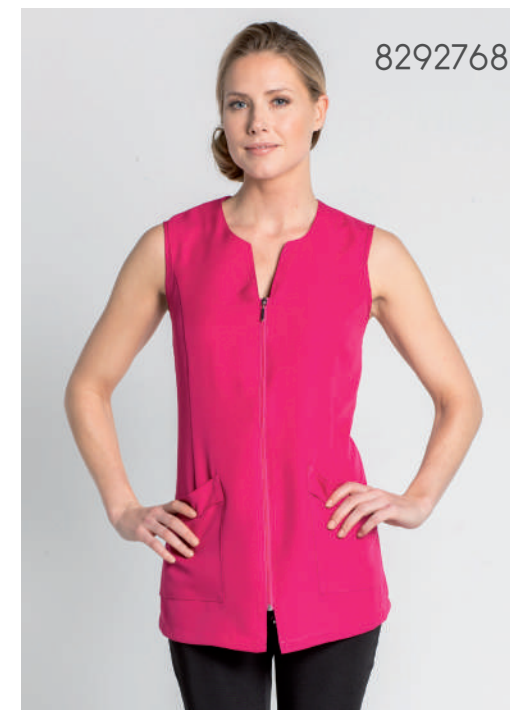
8292725



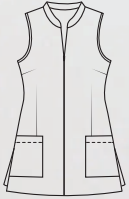
8292573



8292768



80699572



8069

Casaca cuello alto con cremallera parcial invisible. High neck jacket with invisible partial zipper.

489 Verde manzana · Apple green
Microfibra (100% Pol.)
150 gr/m²



572 Fucsia · Fuchsia
Microfibra (100% Pol.)
150 gr/m²



700 Blanco · White
65% Pol. Poly. · 35% Algod./Cotton
195 gr/m²



725 Negro · Black
100% Pol. · Poly.
165 gr/m²



Largo/length: 73 cm
Talla/Size: SP-XG/XS-XXXL



8069700



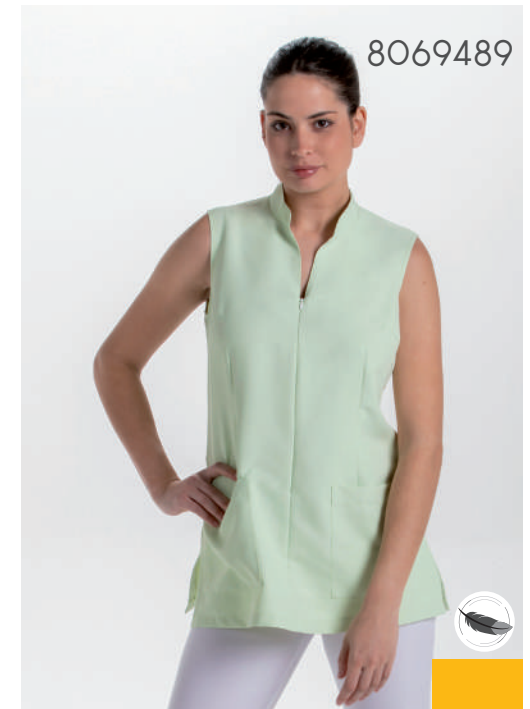
8069725



8069572



8069489



8067570



8067

Casaca sin mangas con cremallera diagonal en microfibra.
Sleeveless jacket with diagonal zipper in microfiber.

482 Azul · Blue
Microfibra (100% Pol.)
150 gr/m²



568 Malva · Mallow
570 Blanco · White
571 Negro · Black

Microfibra (100% Pol.)
150 gr/m²



Largo/length: 69 cm
Talla/Size: SP-XG/XS-XXXL



8067482



8067568



8067571

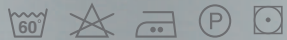


8053700

**8053**

Casaca sin mangas entallada con cremallera. Sleeveless jacket fitted with zipper.

700 Blanco · White
65% Pol./Poly. · 35% Algod./Cotton
195 gr/m²



725 Negro · Black
100% Pol./Poly.
165 gr/m²



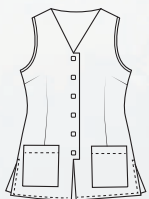
Largo/length: 73 cm
Talla/Size: SP-XG/XS-XXXL



8053725



8068571



8068

Casaca sin mangas con corchetes cuadrados. Sleeveless jacket with square snaps.

489 Verde Manzana · Apple Green

490 Azul Denim · Denim Blue

Microfibra (100% Pol.)
150 gr/m²



570 Blanco · White

571 Negro · Black

100% Pol./Poly.
150 gr/m²



Largo/length: 72 cm

Talla/Size: SP-XG/XS-XXXL



8068490



8068489

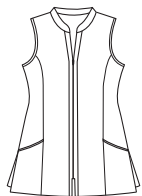


8068570



PORQUE EL ESTILO Y
LA ELEGANCIA RESIDEN
EN UNO MISMO, VISTE DNK.

8160570



8160

Casaca sin mangas de
microfibra con cremallera.
Microfiber sleeveless jacket
with zipper.

570 Blanco · White
571 Negro · Black

Microfibra (100% Pol.)
150 gr/m²



Largo/length: 72 cm
Talla/Size: SP-XG/XS-XXXL



8160571



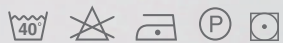
8050571



8050

Chaqueta manga corta con corchetes. Short-sleeved jacket with snaps.

487 Lila · Purple
490 Azul Denim · Denim
Microfibra (100% Pol.)
150 gr/m²



570 Blanco · White
571 Negro · Black

Microfibra (100% Pol.)
150 gr/m²



Largo/length: 70 cm
Talla/Size: SP-XG/XS-XXXL



8050570



8050490



8050487



 **MICROFIBRA**



8059

Chaqueta manga larga con corchetes. Long-sleeved jacket with snaps fasteners.

570 Blanco · White

571 Negro · Black

Microfibra (100% Pol.)
150 gr/m²



Largo/length: 70 cm
Talla/Size: SP-XG/XS-XXXL



8059570

8059571



www.dyneke.com

Chaquetas lisas

 **SARGA**



8274700



8274

Chaqueta manga larga con corchetes. Long-sleeved jacket with snaps fasteners.

700 Blanco · White

65% Pol./Poly. · 35% Algod./Cotton
195 gr/m²

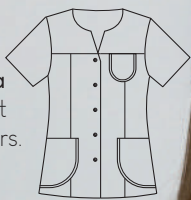


Largo/length: 70 cm
Talla/Size: SP-XG/XS-XXXL



8270

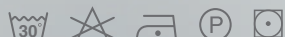
Chaqueta mujer manga corta con corchetes. Women's jacket short sleeves with snap fasteners.



700 Blanco · White
65% Pol. Poly. · 35% Algod./Cotton
195 gr/m²



725 Negro · Black
100% Pol./Poly.
165 gr/m²



Largo/length: 70 cm
Talla/Size: SP-XG/XS-XXXL

8270700
✓ SARGA



8270725



8673568



8673

Chaqueta manga corta con vivo. Short-sleeved jacket with piping.

482 Azul · Blue
Microfibra (100% Pol.)
150 gr/m²



568 Malva · Mallow
Microfibra (100% Pol.)
150 gr/m²



Largo/length: 73 cm
Talla/Size: SP-XG/XS-XXXL

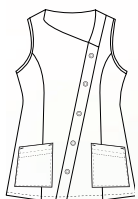


8673482



8041700

8041569



8041

Casaca sin mangas con corchetes en diagonal. Sleeveless jacket with diagonal snap fasteners.

700 Blanco · White
65% Pol. Poly. · 35% Algod./Cotton
195 gr/m²



569 Beige · Beige
Microfibra (100% Pol.)
150 gr/m²



Largo/length: 63 cm
Talla/Size: SP-XG/XS-XXXL





8065570



8065

Chaqueta, corchetes y cremallera. Jacket, snap and zipper.

570 Blanco · White

571 Negro · Black

Microfibra (100% Pol.)
150 gr/m²



Largo/length: 70 cm

Talla/Size: SP-XG/XS-XXXL



www.dyneke.com

8065571



DNK

8051571



8066571



8066570

8051570



8066



8051

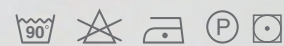
Chaqueta mujer m/ corta, corchetes en tapeta. Women's jacket, short sleeves, snap on the placket.

570 Blanco · White

571 Negro · Black

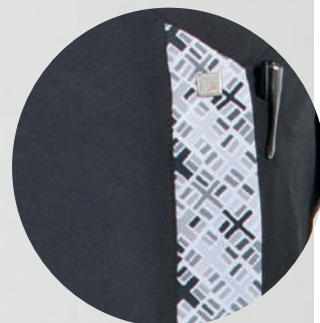
Microfibra (100% Pol.)

150 gr/m²



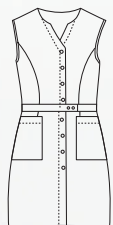
Largo/length: 74 cm

Talla/Size: SP-XG/XS-XXXL



www.dyneke.com

8093487



8093

Bata larga mujer, sin mangas, detalle cintura. Women's long coat, sleeveless, waist detail.

487 Lila · Purple

489 Verde Manzana · Apple Green

Microfibra (100% Pol.)

150 gr/m²



700 Blanco · White

65% Pol. Poly. · 35% Algod./Cotton

195 gr/m²



Largo/length: 90 cm

Talla/Size: SP-XG/XS-XXXL



8093700



8093489



8081571

**8081**

Levita manga corta contraste en solapa. Contrast lapel frock coat, short sleeves.

570 Blanco · White

571 Negro · Black

Microfibra (100% Pol.)
150 gr/m²



Largo/length: 79 cm

Talla/Size: SP-XG/XS-XXXL



www.dyneke.com

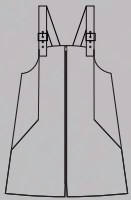
8081570



8136725



Tirantes de polipiel · Leatherette strap.



8136

Pichi hebilla estampado animal print. Animal print buckle pinafore dress.

725 Negro · Black

100% Pol./Poly.
165 gr/m²



Largo/length: 75 cm
Talla/Size: SP-XG/XS-XXXL



8698497



8698

Casaca denim sin mangas
estampado margaritas.
Sleeveless daisy print denim
jacket.

497 Tejano · Denim

78% Pol./Poly.
18% Rayon
4% Elastan
235 gr/m²



Largo/length: 68 cm
Talla/Size: SP-XG/XS-XXXL



8601724



8601

Casaca mariposa con cremallera.
Sleeveless jacket butterfly with zipper.

724 Azul marino · Navy

100% Pol./Poly.
165 gr/m²



Largo/length: 69 cm
Talla/Size: SP-XG/XS-XXXL



8632766



8632

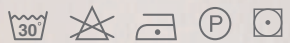
Casaca sin mangas
estampado flor con
corchetes. Flower print
sleeveless jacket with snaps.

727 Azul · Blue

766 Rojo · Red

100% Pol./Poly.

165 gr/m²



Largo/length: 68 cm

Talla/Size: SP-XG/XS-XXXL



8632727



8610725

**8610**

Casaca sin mangas estampada león con cremallera. Lion print sleeveless jacket with zipper.

725 Negro · Black

100% Pol./Poly.
165 gr/m²



Largo/length: 66 cm
Talla/Size: SP-XG/XS-XXXL



8699725

**8699**

Casaca sin mangas estampada círculos rojos. Red circle print sleeveless jacket.

725 Negro · Black

100% Pol./Poly.
165 gr/m²



Largo/length: 72 cm
Talla/Size: SP-XG/XS-XXXL



8638725



8638

Casaca sin mangas estampado hipster. Sleeveless hipster print jacket.

725 Negro/Turquesa · Black/Turquoise

720 Negro/Fucsia · Black/Fuchsia

100% Pol./Poly.
165 gr/m²



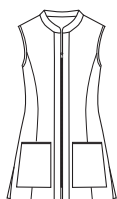
Largo/length: 70 cm
Talla/Size: SP-XG/XS-XXXL



8638720



8162571



8162

Casaca sin mangas estampado camuflaje con cremallera.
Camouflage print microfiber sleeveless jacket with zipper.

571 Negro · Black

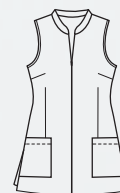
Microfibra (100% Pol.)
150 gr/m²



Largo/length: 72 cm
Talla/Size: SP-XG/XS-XXXL



8602725



8602

Casaca sin mangas estampado animal print, cremallera invisible.
Animal print sleeveless jacket with invisible zipper.

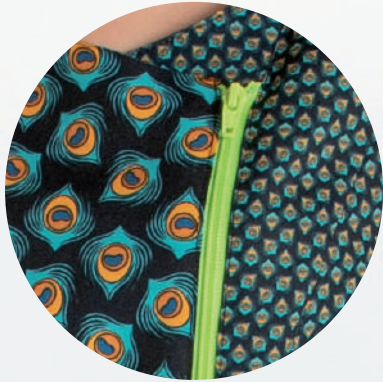
725 Negro · Black

100% Pol./Poly.
165 gr/m²



Largo/length: 73 cm
Talla/Size: SP-XG/XS-XXXL





8696725



8696

Casaca sin mangas estampado con cremallera. Peacock print sleeveless jacket.

725 Negro · Black

100% Pol./Poly.
165 gr/m²



Largo/length: 67 cm
Talla/Size: SP-XG/XS-XXXL



8639725



8639

Casaca sin mangas estampado hello con cremallera. Hello print sleeveless jacket with front zipper.

725 Negro · Black

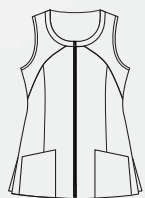
100% Pol./Poly.
165 gr/m²



Largo/length: 67 cm
Talla/Size: SP-XG/XS-XXXL



8034571

**8034**

Casaca sin mangas estampado cebra con cremallera. Sleeveless jacket in zebra print with zipper.

571 Negro · Black

Microfibra (100% Pol.)
150 gr/m²



Largo/length: 72 cm
Talla/Size: SP-XG/XS-XXXL



8035571

**8035**

Casaca sin mangas de microfibra estampado huellas. Sleeveless microfiber jacket with print print.

571 Negro · Black

Microfibra (100% Pol.)
150 gr/m²



Largo/length: 72 cm
Talla/Size: SP-XG/XS-XXXL



8648725



8648

Casaca sin mangas estampado animal. Animal print sleeveless jacket.

725 Negro · Black

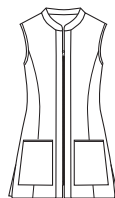
100% Pol./Poly.
165 gr/m²



Largo/length: 70 cm
Talla/Size: SP-XG/XS-XXXL



8161571



8161

Casaca sin mangas estampado acuarela. Sleeveless jacket in watercolor print.

571 Negro · Black

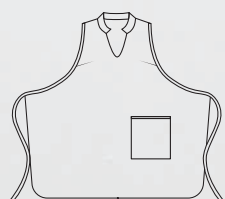
Microfibra (100% Pol.)
150 gr/m²



Largo/length: 72 cm
Talla/Size: SP-XG/XS-XXXL



8605725

**8605**

Estola estampado flor diente de león. Dandelion flower print stole.

725 Negro · Black

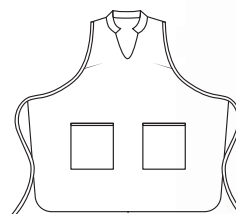
100% Pol./Poly.
165 gr/m²



Largo/length: 79 cm
Talla/Size: Única · Unic



8156725

**8156**

Estola estampado acuarela con cintas. Purple watercolor print stole.

725 Negro · Black

100% Pol./Poly.
165 gr/m²



Largo/length: 82 cm
Talla/Size: Única · Unic





8113

Camiseta punto con bolsillos metalizados, manga 3/4.
Knitted t-shirt with 3/4 sleeve metallic pockets.

827 Negro · Black

96% Pol./Poly. · 6% Elastano
130 gr/m²



Largo/length: 69 cm
Talla/Size: SP-XG/XS-XXXL



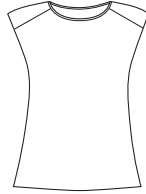
DNK, DONDE ELEGANCIA,
ESTILO Y COMODIDAD
SE UNEN.

8113827





8115827



8115

Camiseta de punto con hombreras en raso negro.
Knitted t-shirt with black satin shoulder pads.

827 Negro · Black

96% Pol./Poly. · 6% Elastano
130 gr/m²



Largo/length: 60 cm
Talla/Size: SP-XG/XS-XXXL



8116827



8116

Camiseta de punto de manga corta vuelta ranglan. Short-sleeved raglan turn-up knit T-shirt.

827 Negro · Black

96% Pol./Poly. · 6% Elastano
130 gr/m²



Largo/length: 62 cm
Talla/Size: SP-XG/XS-XXXL



8117479

▶ POLIAMIDA



8117

Camiseta punto con lazo cebra. Knitted t-shirt with zebra bow.

479 Black · Negro

90% Pol./Poly. · 10% Elast.
205 gr/m²



Largo/length: 60 cm
Talla/Size: SP-XG/XS-XXXL



8109125



8109

Vestido camisero con lazo ajustable, manga larga.
Adjustable tie shirt dress, long sleeves.

125 Negro · Black

97 % Pol./poly. · 3 % Elastano
160 gr/m²



Largo/length: 100 cm
Talla/Size: SP-XG/ XS-XXXL



DNK

8114827

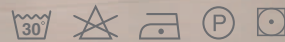


8114

Vestido punto con cinturón, trabilla en mangas. Knitted dress with a belt, sleeves with lab.

827 Negro · Black

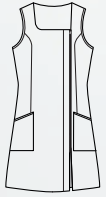
94 % Pol./Poly. · 6 % Elastano
130 gr/m²



Largo/length: 90 cm
Talla/Size: SP-XG/ XS-XXXL



8047725



8047

Pichi largo con cremallera frontal en lado izquierdo. Long pinafore with front zipper on the left side.

700 Blanco · White
65% Pol./Poly. · 35% Algod./Cotton
195 gr/m²



725 Negro · Black
100% Pol./Poly.
165 gr/m²



Largo/length: 90 cm
Talla/Size: SP-XG/XS-XXXL



8047700



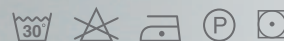
8279725



8279

Casaca sin mangas con corchetes. Sleeveless jacket with snaps.

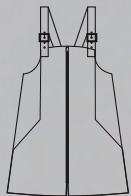
725 Negro · Black
100% Pol./Poly.
165 gr/m²



Largo/length: 70 cm
Talla/Size: SP-XG/XS-XXXL



COMERCIO



Detalles en polipiel.
Leatherette details.

8110830

8110

Pichi corto con hebillas y tirantes en polipiel. Short dungarees with buckle and imitation leather straps.

830 Negro · Black

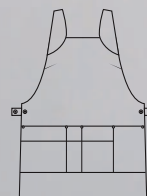
94% Pol./Poly. · 6% Elastano
225 gr/m²



Largo/length: 76 cm
Talla/Size: SP-XG/XS-XXXL



8111105



8111

Estola peluquería multibolsillos.
Multi-pocket hairdressing stola.

105 Negro · Black

100% Pol./Poly
208 gr/m²



Largo/length: 78 cm
Talla/Size: Única · Unic



DNK

8101104

**8101**

Kimono peluquería. Hairdresser kimono.

104 Negro · Black

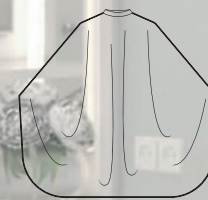
100% Pol./Poly
122 gr/m²



Largo/length: 109 cm
Talla/Size: Única · Unic



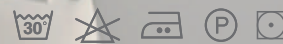
8102104

**8102**

Peinador peluquería. Hairdresser cape.

104 Negro · Black

100% Pol./Poly
122 gr/m²



Largo/length: 94 cm
Talla/Size: Única · Unic

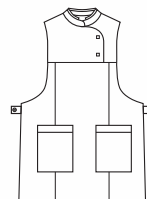
8159570



8159844



8159571



8159

Estola comercio cuello mao.
Multi-pocket stole.

844 Gris · Grey

70% Alg./Coton 30 Pol./Poly
130 gr/m²



570 Blanco · White

571 Negro · Black

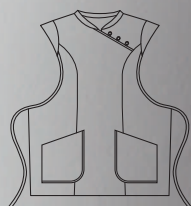
100% Pol./Poly
150 gr/m²



Largo/length: 80 cm
Talla/Size: Única · Unic

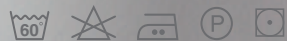


8470768

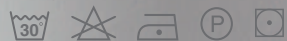
**8470**

Estola cuello mao con cintas ajustables traseras. Mandarin collar stole with adjustable back straps.

700 Blanco · White
65% Pol. Poly. · 35% Algod./Cotton
195 gr/m²



725 Negro · Black
768 Fucsia · Fucsia
100% Pol. · Poly.
165 gr/m²



Largo/length: 77 cm
Talla/Size: Única · Unic



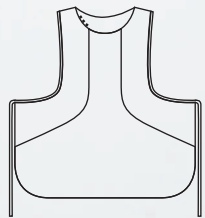
8470700



8470725



8158487



8158

Estola bicolor en microfibra con cintas. Two-tone microfiber stole with ribbons.

487 Lila · Purple
Microfibra (100% Pol.)
150 gr/m²



567 Rojo/Negro · Rojo/Black
570 Blanco · White
584 Gris · Gray

Microfibra (100% Pol.)
150 gr/m²



Largo/length: 78 cm
Talla/Size: Única · Unic



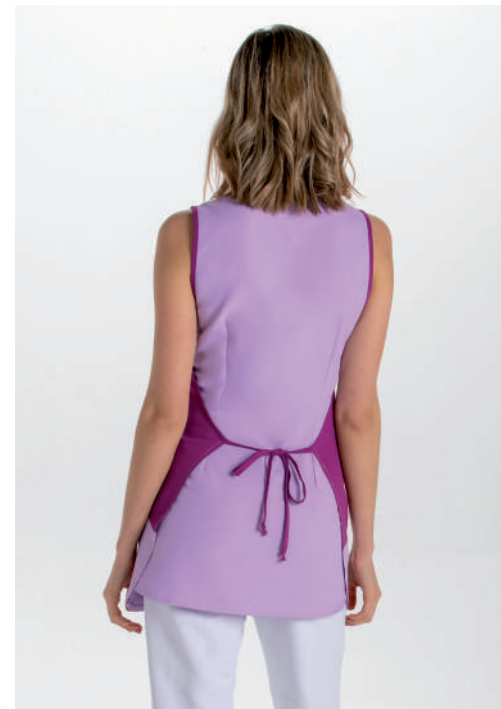
8158570



8158584



8158567



40

DNK

8480725

**8480**

Estola ángulo con cintas.
Angled stole with ribbons.

709 Marrón · Purple

725 Negro · Black

100% Pol./Poly.

165 gr/m²



844 Gris · Grey

70% Algod./Cotton · 30% Pol./Poly.

130 gr/m²



Largo/length: 72 cm

Talla/Size: Única · Unic



8480709

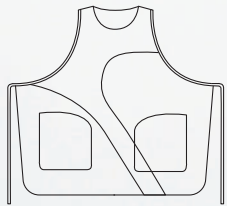


8480844



8025572

¿MONTAJE?



8025

Estola bicolor formas en microfibra con cintas. Two-tone stole shapes in microfiber with ribbons.

487 Lila · Purple
Microfibra (100% Pol.)
150 gr/m²



572 Fucsia · Fuchsia
Microfibra (100% Pol.)
150 gr/m²



Largo/length: 78 cm
Talla/Size: Única · Unic



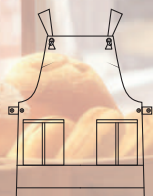
8025487



8474387

8474887

8474850

**8474**

Estola tejana multiservicios con contrastes y botón. Multi-service denim stole with contrasts and button.

387 Marrón · Brown

389 Azul · Blue

850 Rosa · Pink

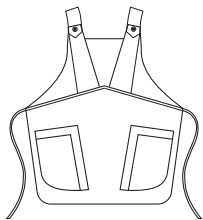
887 Verde · Green

55% Pol./Poly. · 42% Algod./Cotton
· 3% Elastano
180 gr/m²



Largo/length: 79 cm
Talla/Size: Única · Unic





8157

Estola tejana con diseño geométrico con cintas. Texan stole with geometric design with ribbons.

775 Tejano · Denim

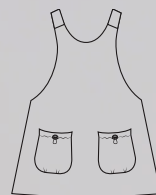
55% Pol./Poly. · 42% Algod./Cotton · 3% Elastano
180 gr/m²



Largo/length: 82 cm
Talla/Size: Única · Unic



8157775



8956

Estola tejana cruzada con bolsillos fruncidos. Crossed denim stole with gathered pockets.

497 Tejano · Denim

78% Pol./Poly. · 18% Rayon · 4% Elastano
235 gr/m²



Largo/length: 84 cm
Talla/Size: M-SG/M-XL



8956497



8959186



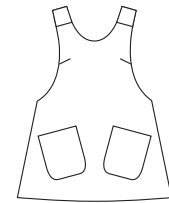
8959971



8959978



8959209



8959

Estola cruzada de cuadros.
Cross plaid stole.

- 186 Morado · Purple
- 971 Pistachio · Pistachio
- 978 Azul · Blue
- 209 Gris · Grey

70% Alg./Poly ·
30% Pol./Poly
155 gr/m²

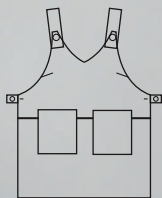


Largo/length: 84 cm
Talla/Size: M-SG/M-XL



COMERCIO

DISEÑOS ORIGINALES Y ACTUALES.
SIÉNTETE ORGULLOSO DE LUCIRLOS
EN TU NEGOCIO.



8076

Estola en loneta con botones.
Canvas stole with buttons.

- 381 Marrón · Brown
- 382 Gris · Gray
- 383 Granate · Garnet
- 384 Azul · Blue
- 385 Verde · Green
- 386 Rosa · Pink

55% Algod./Cotton · 45% Pol./Poly
185 gr/m²



Largo/length: 82 cm
Talla/Size: Única · Unic



8076386



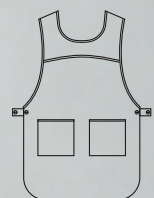
8076382







8468573



8468

Estola microfibras rayas con botones.
Striped microfiber service stole with buttons.

- 572 Fucsia · Fuchsia
- 584 Gris · Gray
- 569 Beige · Beige
- 583 Azul marino · Navy blue
- 573 Pistacho · Pistachio

Microfibra (100% Pol.)
150 gr/m²



Largo/length: 80 cm
Talla/Size: Única · Unic



8468572



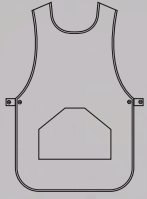
8468569



8468584



8468583



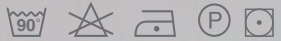
8467

Estola básica con botones.
Basic stole with buttons.

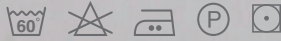
490 Azul denim · Denim blue
Microfibra (100% Pol.)
150 gr/m²



568 Malva · Mallow
Microfibra (100% Pol.)
150 gr/m²



700 Blanco · White
65% Pol. Poly. · 35% Algod./Cotton
195 gr/m²



722 Granate · Garnet
725 Negro · Black
100% Pol./Poly.
165 gr/m²



Largo/length: 81 cm
Talla/Size: Única · Unic



8467490



8467568



8467700

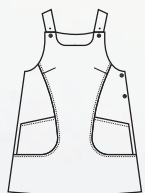


8467722



8467725





8198

Pichi multiservicio ajustable con corchetes. Adjustable multiservice jumpsuit with brackets.

775 Tejano · Denim

55% Pol./Poly. · 42% Algod./Cotton
· 3% Elastano
180 gr/m²



700 Blanco · White

65% Pol. Poly. · 35% Algod./Cotton
195 gr/m²



709 Arena · Sand

721 Rojo · Red

725 Negro · Black

100% Pol. · Poly.

165 gr/m²



Largo/length: 83 cm

Talla/Size: SP-XG/ XS-XXXL



8198721



8198700



8198709



8198725



8198775



8819

8819571

Chaqueta caballero cremallera dorada. Men's jacket gold zipper.

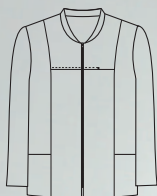
571 Negro · Black

Microfibra (100% Pol.)
150 gr/m²



Largo/length: 75 cm

Talla/Size: SP-XG/ XS-XXXL



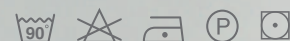
8828

8828571

Chaqueta mujer cremallera dorada. Woman's jacket gold zipper.

571 Negro · Black

Microfibra (100% Pol.)
150 gr/m²



Largo/length: 75 cm

Talla/Size: SP-XG/ XS-XXXL





8253

Chaqueta unisex manga corta con corchetes. Unisex's short sleeves jacket with snap fasteners.

571 Negro · Black
Microfibra (100% Pol.)
150 gr/m²



725 Negro · Black
100% Pol./Poly.
165 gr/m²



Largo/length: 73 cm
Talla/Size: SP-XG/ XS-XXXL



8254571



8253571



8253725



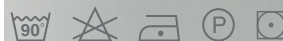
8254725



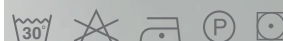
8254

Chaqueta unisex manga larga con corchetes. Unisex's long sleeves jacket with snap fasteners.

571 Negro · Black
Microfibra (100% Pol.)
150 gr/m²



725 Negro · Black
100% Pol. · Poly.
165 gr/m²



Largo/length: 73 cm
Talla/Size: SP-XG/ XS-XXXL





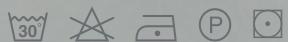
8207725



8207

Chaqueta hombre manga corta, cuello mao. Men's jacket, short sleeves, mao collar.

725 Negro · Black
100% Pol. · Poly.
165 gr/m²



Largo/length: 76 cm
Talla/Size: SP-XG/ XS-XXXL

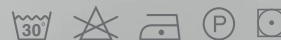


8208725

8208

Chaqueta hombre manga larga, cuello mao. Men's jacket, long sleeves, mao collar.

725 Negro · Black
100% Pol. · Poly.
165 gr/m²



Largo/length: 76 cm
Talla/Size: SP-XG/ XS-XXXL



8276829

Patrón push up.
Push-up pattern.



8276

Pantalón push up con talle bajo y trincha sin elástico.
Push-up trousers with low waist and waistband without elastic.

829 Blanco · White
97% Pol./Poly. · 3% Elastan
240 gr/m²



830 Negro · Black
94% Pol./Poly. · 6% Elastan
225 gr/m²



Largo/length: 98 cm
Talla/Size: 36-60



8276830



8056570

 **MICROFIBRA**



8056

Pantalón mujer con cintura baja y goma. Women's pants with low waist and elastic.

570 Blanco · White

571 Negro · Black

Microfibra (100% Pol.)

150 gr/m²



700 Blanco · White

65% Pol. Poly. · 35% Algod./Cotton

195 gr/m²



725 Negro · Black

100% Pol. · Poly.

165 gr/m²



Largo/length: 108 cm

Talla/Size: SP-XG/XS-XXXL





8280497

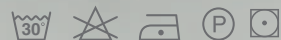
8280830



8280

Pantalón culotte de pernera ancha y corta. Culotte pants wide and short leg.

497 Tejano · Denim
78% Pol./Poly.
18% Rayon
4% Elastan
235 gr/m²



830 Negro · Black
94% Pol./Poly. · 6% Spandex
225 gr/m²



Largo/length: 82 cm
Talla/Size: SP-XG/XS-XXXL



8048570



8048

Pantalón culotte de pernera ancha y corta con cremallera lateral. Culotte pants wide and short leg with side zipper.

570 Blanco · White

Microfibra (100% Pol.)
150 gr/m²



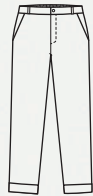
Largo/length: 92 cm
Talla/Size: SP-XG/XS-XXXL



8219844

8219

Pantalón tobillero con cintura baja y goma atrás. Ankle pants with low-waisted and elastic rubber back.



844 Gris · Gray

841 Negro · Black

70% Algod./Cotton · 30% Pol. Poly.
130 gr/m²



Largo/length: 91 cm

Talla/Size: SP-XG/XS-XXXL



8219841



8077725



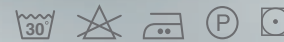
8077

Pantalón mujer con cinturilla plana y cremallera. Pants flat waist and zipper.

725 Negro · Black

100% Pol. Poly.

165 gr/m²



Largo/length: 108 cm

Talla/Size: SP-XG/XS-XXXL



9929491



9929

Pantalón unisex con cinturilla elástica y bolsillos. Unisex pants with elastic waistband and pockets.

491 Gris medio · Medium gray
Microfibra (100% Pol.)
150 gr/m²



570 Blanco · White
Microfibra (100% Pol.)
150 gr/m²



Largo/length: 108 cm
Talla/Size: SP-XG/XS-XXXL



9929570



9929775



9929

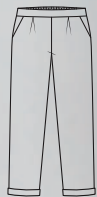
Pantalón unisex con cinturilla elástica y bolsillos. Unisex trousers with elastic waist and pockets.

775 Tejano · Denim
55% Pol. Poly. · 42% Algod./Cotton
3% Elastan
180 gr/m²



Largo/length: 108 cm
Talla/Size: SP-XG/XS-XXXL





8287

Pantalón mujer, dobladillo y raya marcada. Women's trousers with hem and marked crease.

700 Blanco · White
67% Pol. Poly. · 33% Algod./Cotton
195 gr/m²



725 Negro · Black
100% Pol. · Poly.
165 gr/m²



Largo/length: 98 cm
Talla/Size: SP-XG/XS-XXXL



8287700



8287725

www.dyneke.com

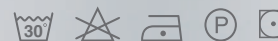
8525725



8525

Pantalón cinturilla plana y goma en laterales y espalda. Flat waistband trousers with elastic on the sides and back.

725 Negro · Black



100% Pol. · Poly.
165 gr/m²

Largo/length: 102 cm
Talla/Size: SP-XG/XS-XXXL



8061700



8061

Bermudas con bolsillos y cintura de gomilla. Bermuda shorts with pockets and elasticated waist.

700 Blanco · White

65% Pol. Poly. · 35% Algod./Cotton
195 gr/m²



Largo/length: 52 cm
Talla/Size: SP-XG/XS-XXXX

8062700

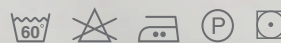


8062

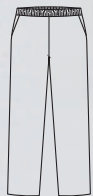
Pantalón pirata con cintura elástica en la parte posterior. Cropped pants with elastic waist at the back.

700 Blanco · White

67% Pol. Poly. · 33% Algod./Cotton
195 gr/m²



Largo/length: 78 cm
Talla/Size: SP-XG/XS-XXXX



9929725

9929

Pantalón unisex con bolsillos y cinturilla con goma. Unisex pants with pockets and elastic waistband.

900 Blanco · White
67% Pol. Poly. · 33% Algod./Cotton
195 gr/m²
Talla/Size: 36-62



725 Negro · Black
100% Pol. · Poly.
165 gr/m²
Talla/Size: SP-XG/XS-XXXL



Largo/length: 108 cm



9929900

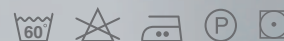


8201700

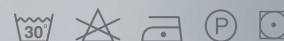
8201

Pantalón sin bolsillos con cinturilla elástica. Pants without pockets with elastic waistband.

700 Blanco · White
65% Pol. Poly. · 35% Algod./Cotton
195 gr/m²
Talla/Size: 36-62



725 Negro · Black
100% Pol. · Poly.
165 gr/m²
Talla/Size: SP-XG/XS-XXXL



Largo/length: 105 cm

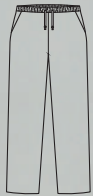


8201725



8540571

 MICROFIBRA



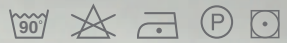
8540

Pantalón con bolsillos laterales abrochado con cordón. Pants with side pockets fastened with drawstring.

701 Negro · Black
65% Pol. Poly. · 35% Algod./Cotton
195 gr/m²



571 Negro · Black
Microfibra (100% Pol.)
150 gr/m²



Largo/length: 110 cm
Talla/Size: SP-XG/XS-XXXL



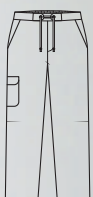
DNK





8540701

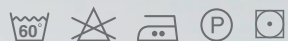
8542701



8542

Pantalón caballero trinchas con cintas. Men's pants with drawstring elastic waist.

701 Negro · Black
65% Pol. Poly. · 35% Algod./Cotton
195 gr/m²



Largo/length: 107 cm
Talla/Size: SP-XG/XS-XXXL

8485701

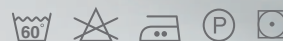


8485

Pantalón caballero con cremallera. Men's pants with zipper.

701 Negro · Black

65% Pol. Poly. · 35% Algod./Cotton
195 gr/m²

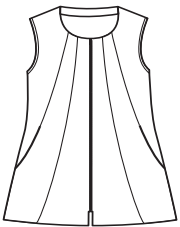


Largo/length: 113 cm
Talla/Size: SP-XG/XS-XXXL

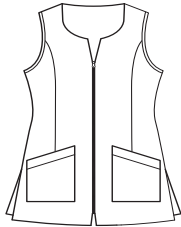


ÍNDICE GRÁFICO

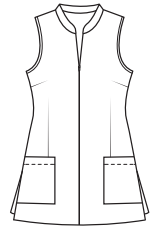
8269 pág. 12



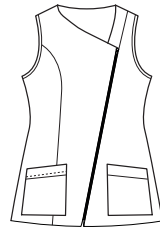
8292 pág. 14



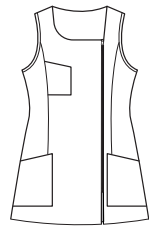
8069 pág. 15



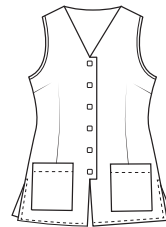
8067 pág. 16



8053 pág. 17



8068 pág. 18



8160 pág. 19



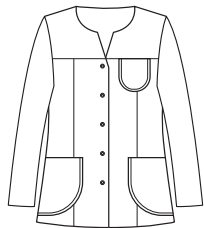
8050 pág. 20



8059 pág. 21



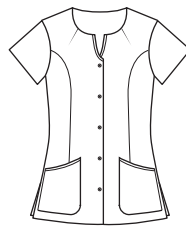
8274 pág. 21



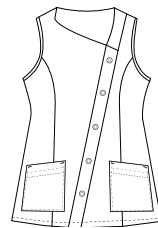
8270 pág. 22



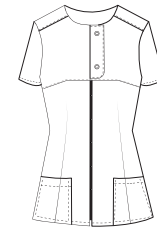
8673 pág. 22



8041 pág. 23



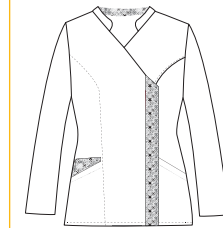
8065 pág. 24



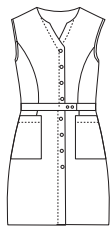
8051 pág. 25



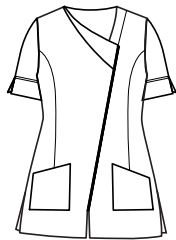
8066 pág. 25



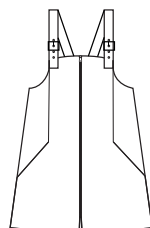
8093 pág. 26



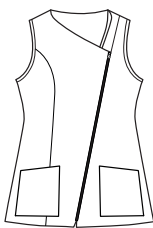
8081 pág. 27



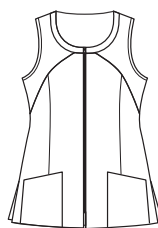
8136 pág. 28



8698 pág. 29



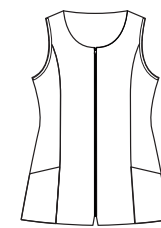
8601 pág. 29



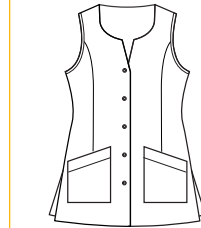
8632 pág. 30



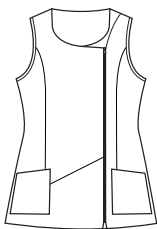
8610 pág. 31



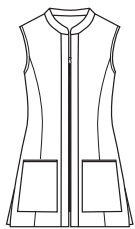
8699 pág. 31



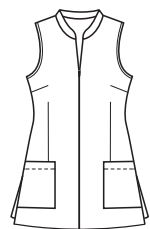
8638 pág. 32



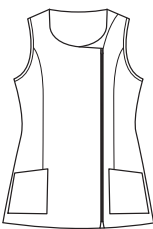
8162 pág. 33



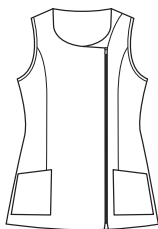
8602 pág. 33



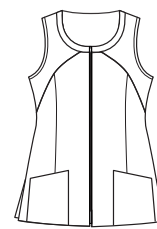
8696 pág. 34



8639 pág. 34



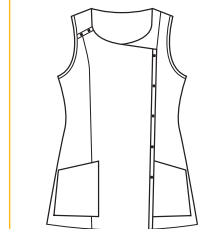
8034 pág. 35



8035 pág. 35



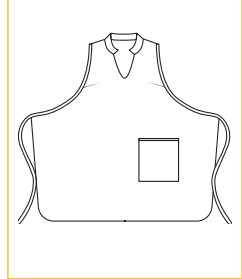
8648 pág. 36



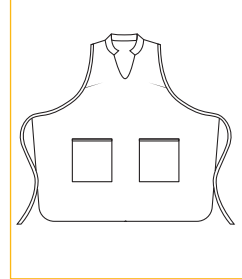
8161 pág. 36



8605 pág. 37



8156 pág. 37



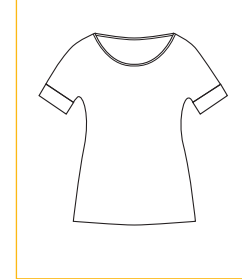
8113 pág. 38



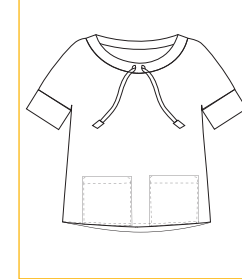
8115 pág. 39



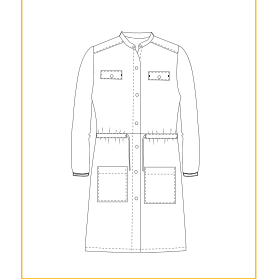
8116 pág. 39



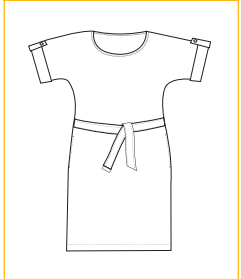
8117 pág. 39



8109 pág. 40



8114 pág. 40



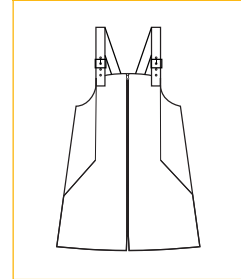
8047 pág. 41



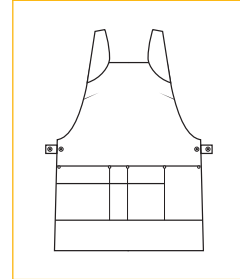
8279 pág. 41



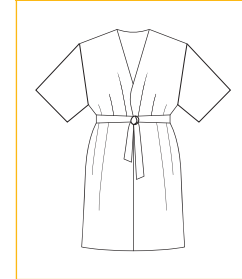
8110 pág. 42



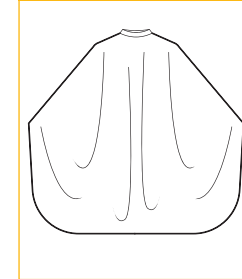
8111 pág. 42



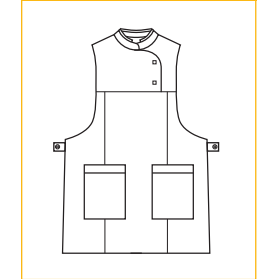
8101 pág. 43



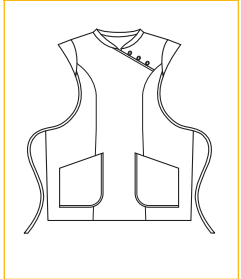
8102 pág. 43



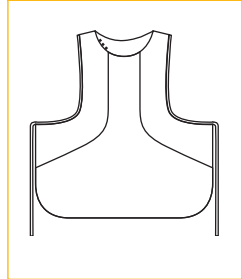
8159 pág. 44



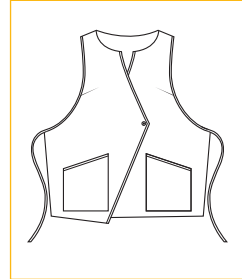
8470 pág. 45



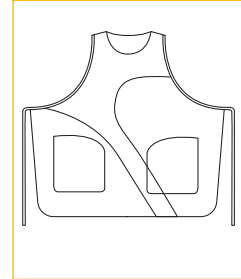
8158 pág. 46



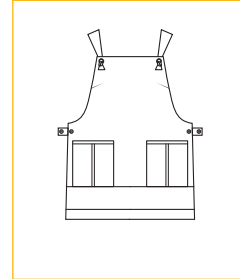
8480 pág. 47



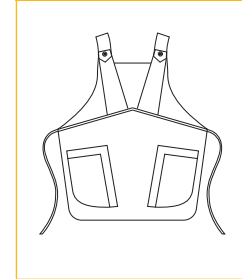
8025 pág. 48



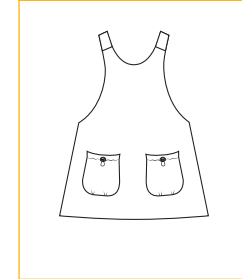
8474 pág. 49



8157 pág. 50



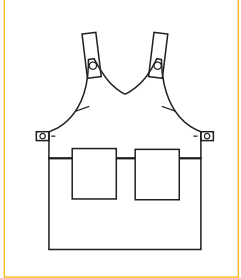
8956 pág. 50



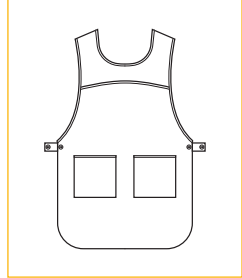
8959 pág. 51



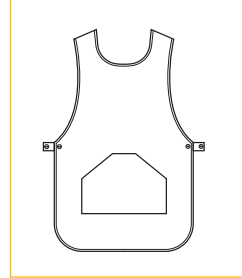
8076 pág. 52



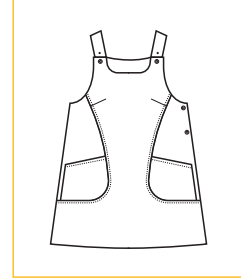
8468 pág. 54



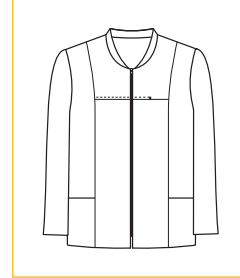
8467 pág. 55



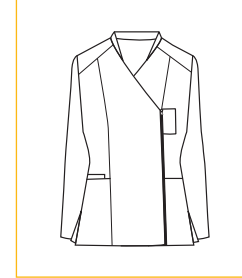
8198 pág. 56



8819 pág. 57



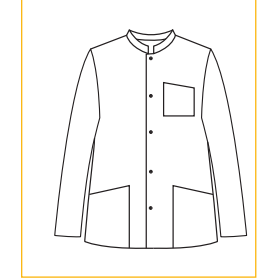
8828 pág. 57



8253 pág. 58



8254 pág. 58



ÍNDICE GRÁFICO

8207 pág. 59



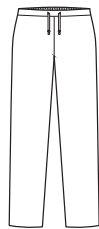
8208 pág. 59



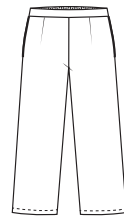
8276 pág. 60



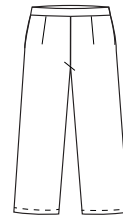
8056 pág. 61



8280 pág. 62



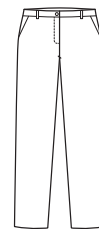
8048 pág. 62



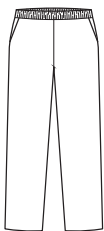
8219 pág. 63



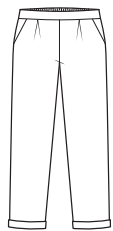
8077 pág. 63



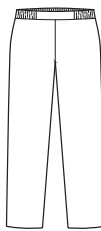
9929 pág. 64/67



8287 pág. 65



8525 pág. 65



8061 pág. 66



8062 pág. 66



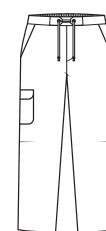
8201 pág. 67



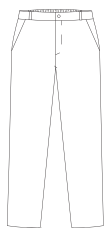
8540 pág. 68



8542 pág. 69



8485 pág. 69



GUÍA DE TALLAS

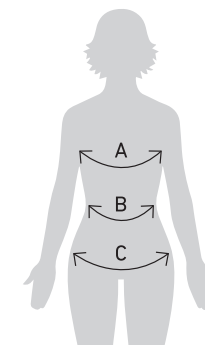
Guía de tallaje mujer

Women measurement guide

- A Perímetro pecho / Chest contour
- B Perímetro cintura / Waist contour
- C Perímetro cadera / Hip contour

Casacas, Pichis y Prendas Unisex / Tunics Jumper dress and unisex clothing.

	SP		P		M		G		SG		SSG		XG	
	36	38	40	42	44	46	48	50	52	54	56	58	60	62
Pecho Chest	80	84	88	92	96	100	104	108	112	116	120	124	128	132
Cadera Hip	88	92	96	100	104	108	112	116	120	124	128	132	136	140



Pantalones Mujer y Pantalones Unisex / Woman trousers and unisex trousers.

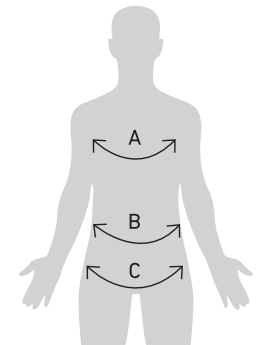
	SP		P		M		G		SG		SSG		XG	
	36	38	40	42	44	46	48	50	52	54	56	58	60	62
Cintura Waist	64	68	72	76	80	84	88	92	96	100	104	108	112	116
Cadera Hip	90	94	98	102	106	110	114	118	122	126	130	134	138	142

Guía de tallaje hombre Men measurement guide

- A Perímetro pecho / Chest contour
- B Perímetro cintura / Waist contour
- C Perímetro cadera / Hip contour

Casacas / Tunics.

	SP	P	M	G	SG	SSG	XG
	42-44	46-48	50-52	54-56	58-60	62-64	66-68
Pecho Chest	84-90	92-98	100-106	108-114	116-122	124-130	132-138
Cadera Hip	82-88	90-96	98-104	106-112	114-120	122-128	130-136



Pantalones Hombre / Man trousers.

	SP		P		M		G		SG		SSG		XG	
	36	38	40	42	44	46	48	50	52	54	56	58	60	62
Cintura Waist	70	74	78	82	86	90	94	98	102	106	110	114	118	122
Cadera Hip	82	86	90	94	98	102	106	110	114	118	122	126	130	134

LEYENDA/ SIMBOLOGÍA

Tecnología de nuestros tejidos y sus propiedades.

Dyneke apuesta por la innovación tanto en sus diseños como en los materiales que se incorporan en nuestras prendas, de esta forma obtenemos unos resultados garantizables en cuanto a comodidad y resistencia.

Technology of our tissues and their properties.

Dyneke is committed to innovation both in its designs and in the materials that are incorporated in our garments, in this way we obtain a guaranteed results in terms of comfort and resistance.



Rejilla transpirable y elástica/ Breathable and elastic mesh.



Extraconfort, suave al tacto/ Extra comfort, soft touch



lones de plata, antiolor, antibacteriana/ Silver ions, anti-odor, antibacterial.



Hidrofugado, repele líquidos/ Water-repellent.



Tejido elástico/ Elastic fabric.



Cierre con cremallera/ Zipper closure.



Cierre con botón/ Button closure.



Cierre con corchete redondo/ Square clasp closure.



Cierre con corchete cuadrado/ Square clasp closure.



Cierre con lazo/ Bow closure.



Tejido rico en algodón/ Cotton-rich fabric.



Tejido denim, tejano/ Denim fabric.

DNK
DYNEKE

DYNEKE



¡Descarga
el catálogo completo
en tu dispositivo móvil!



^{DNK}
DYNEKE

CONFECCIONES DYNEKE · Herois del Bruc, 9 · 08784 Piera · Tel: 93778 90 83 · WWW.DYNEKE.COM

